

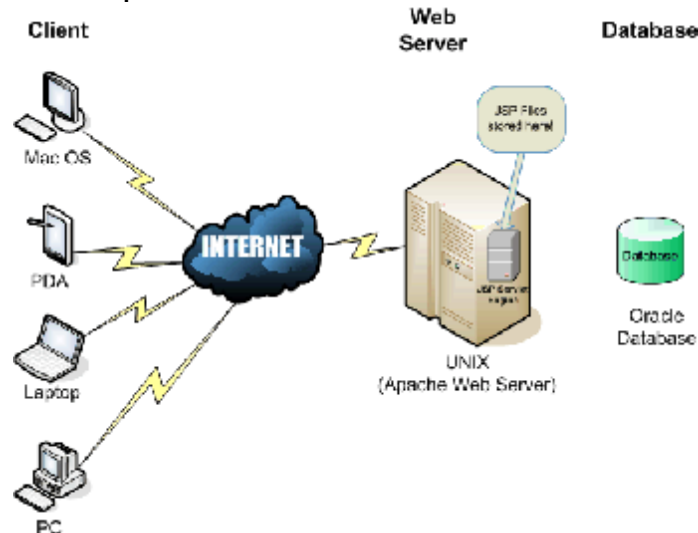
Title:- Implementation and Installation of Web Server in Java.**What is Web Server?**

A web server can be referred to as either the hardware (the computer) or the software (the computer application) that helps to deliver content that can be accessed through the Internet.

The most common use of Web servers is to host Web sites but there are other uses like data storage or for running enterprise applications.

The primary function of a web server is to deliver web pages on the request to clients. This means delivery of HTML documents and any additional content that may be included by a document, such as images, style sheets and JavaScripts.

A client, commonly a web browser or web crawler, initiates communication by making a request for a specific resource using HTTP and the server responds with the content of that resource or an error message if unable to do so. The resource is typically a real file on the server's secondary memory, but this is not necessarily the case and depends on how the web server is implemented.



While the primary function is to serve content, a full implementation of HTTP also includes ways of receiving content from clients. This feature is used for submitting web forms, including uploading of files.

Many generic web servers also support server-side scripting, e.g., Apache HTTP Server and PHP. This means that the behaviour of the web server can be scripted in separate files, while the actual server software remains unchanged. Usually, this function is used to create HTML documents "on-the-fly" as opposed to returning fixed documents. This is referred to as dynamic and static content respectively. The former is primarily used for retrieving and/or modifying information from databases. The latter is, however, typically much faster and more easily cached.

Web servers are not always used for serving the world wide web. They can also be found embedded in devices such as printers, routers, webcams and serving only a local network. The web server may then be used as a part of a system for monitoring and/or administrating the device in question. This usually means that no additional software has to be installed on the client computer, since only a web browser is required (which now is included with most operating systems).

e.g. Web Servers List

Apache web server - the HTTP web server

Free and the most popular web server in the world developed by the Apache Software Foundation. Apache web server is an open source software and can be installed and made to work on almost all operating systems including Linux, Unix, Windows, FreeBSD, Mac OS X and more. About 60% of the web server machines run the Apache web server.

Apache Tomcat

The Apache Tomcat has been developed to support servlets and JSP scripts. Though it can serve as a standalone server, Tomcat is generally used along with the popular Apache HTTP web server or any other web server. Apache Tomcat is free and open source and can run on different operating systems like Linux, Unix, Windows, Mac OS X, Free BSD.

Microsoft's Internet Information Services (IIS) Windows Server.

IIS Windows Web Server has been developed by the software giant, Microsoft. It offers higher levels of performance and security than its predecessors. It also comes with a good support from the company and is the second most popular server on the web.

Print outs of IIS server

Print outs of Java program source code and output